

# How Much is a Billion?

A Study in Perspective

Crafted by Bill Blair  
Johns Hopkins University

# University of Michigan Stadium

## 100,000 People





# 1,000,000 People



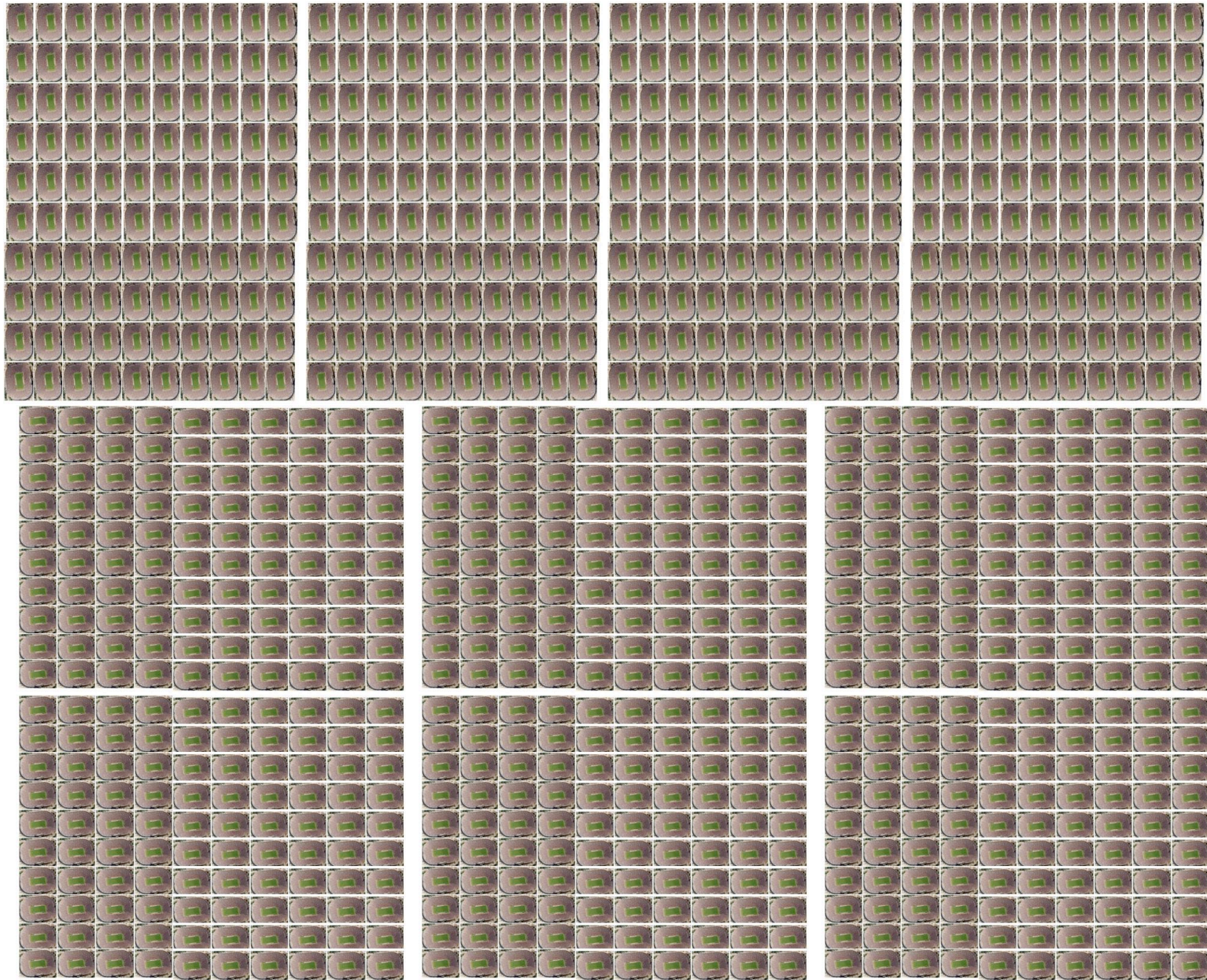


# 10,000,000 People

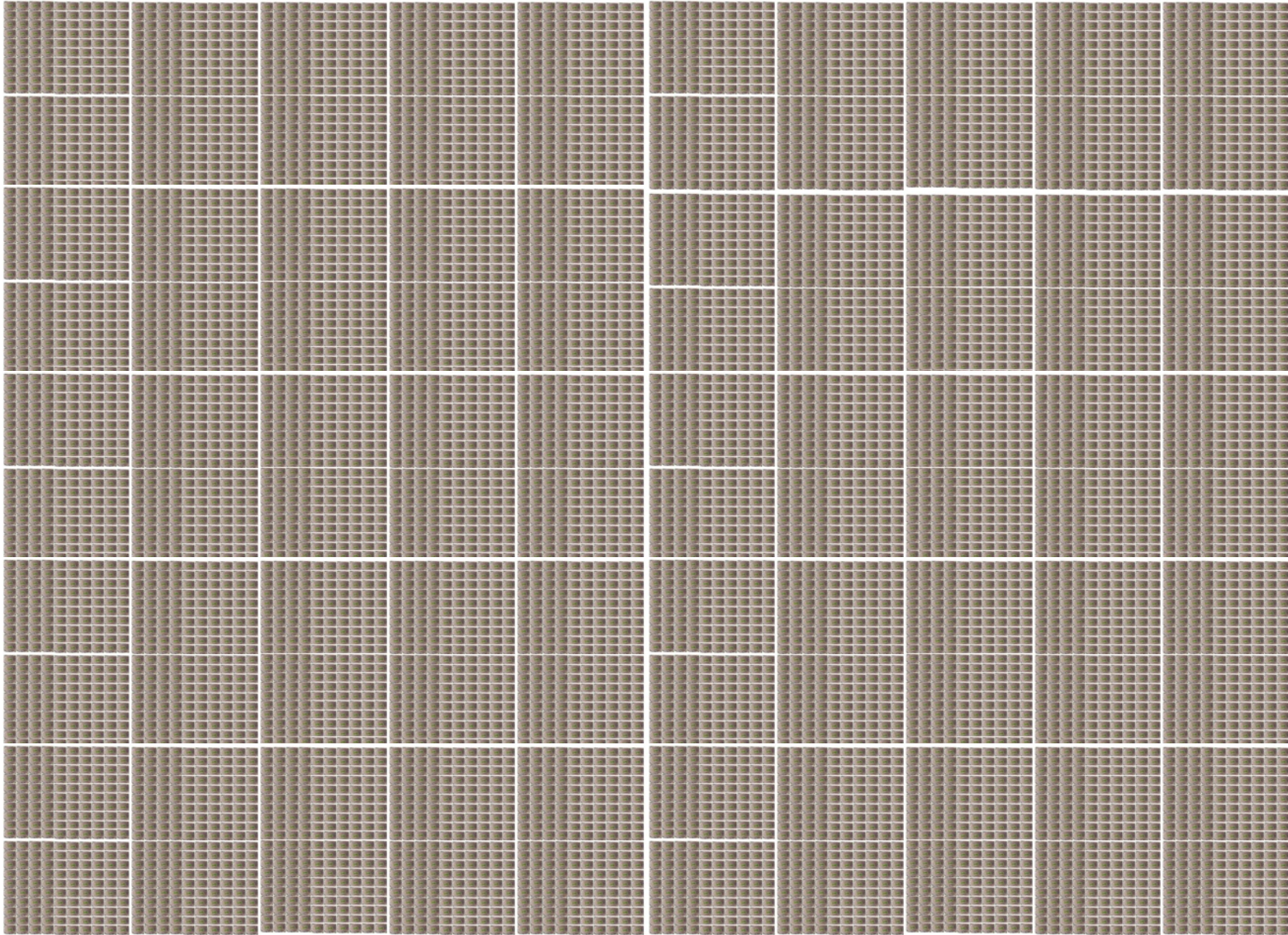




# 100 Million People

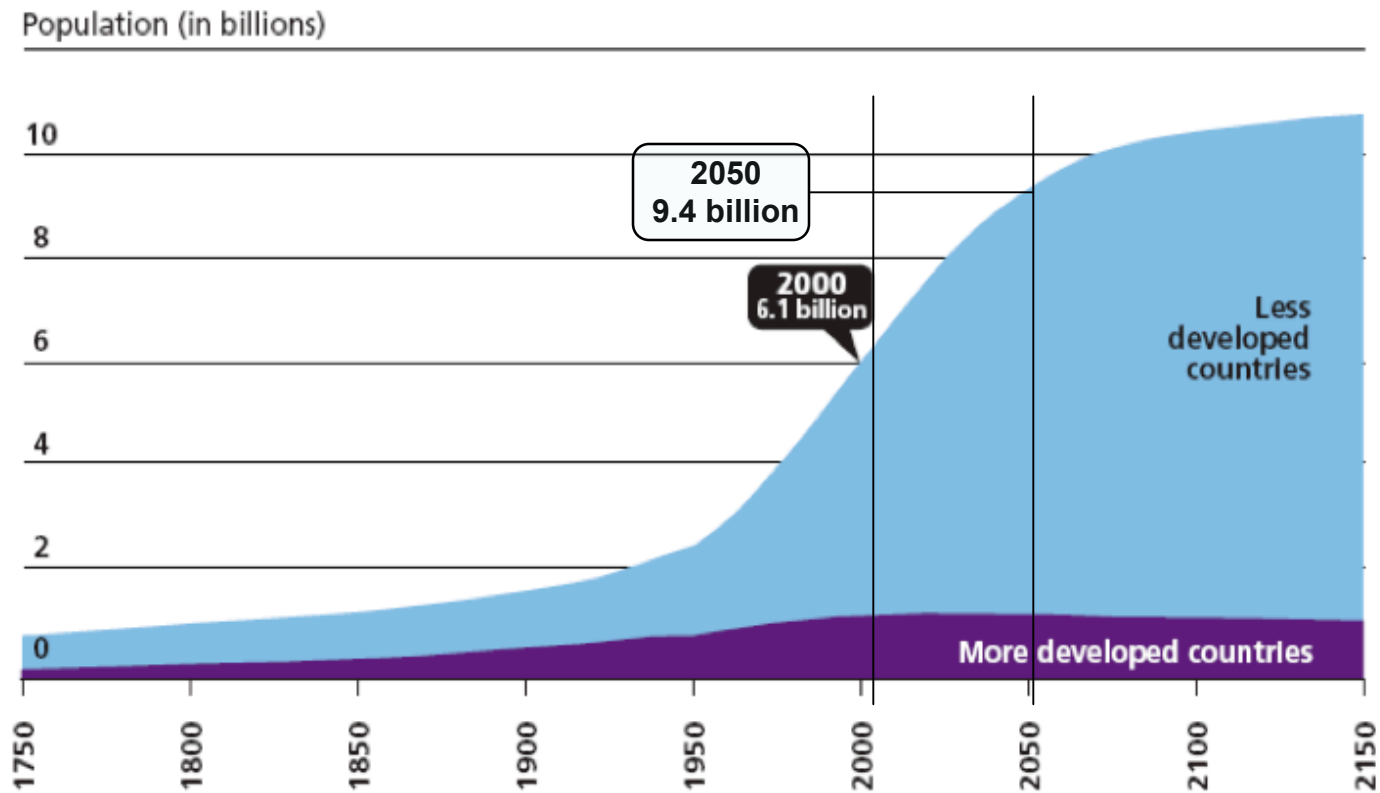


1 Billion People! (10,000 stadia!)





Between now and the middle of this century, the world population is expected to *increase* by ***more than 3 billion people.***



Source: United Nations, *World Population Prospects, The 1998 Revision* (New York: UN, 1998); and estimates by the Population Reference Bureau.

Copyright © 2001 Population Reference Bureau

That means over *200,000 people per day* are being added to the world population.



! ! ! ! ! ! ! ! ! !